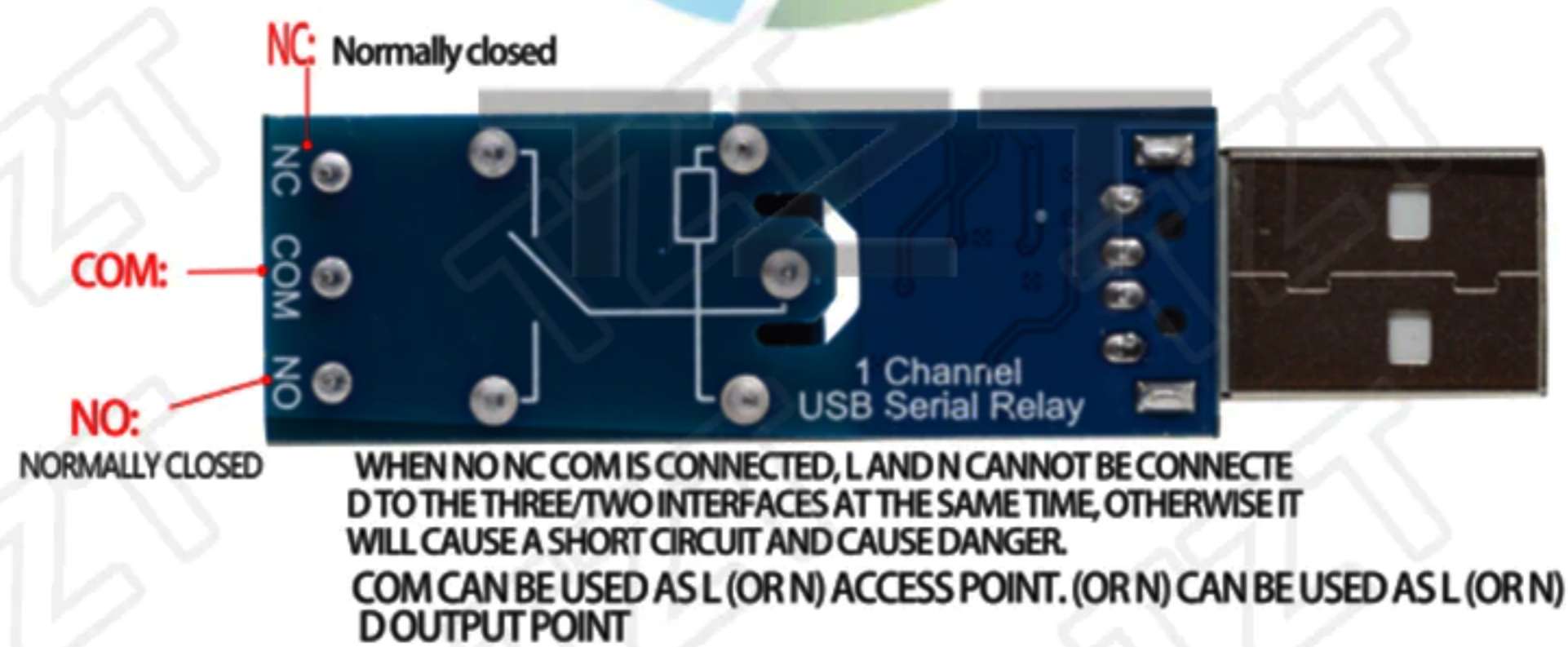


## PARAMETERS

1. Onboard high-performance microcontroller chip;
2. Onboard CH340 USB control chip;
3. 2 onboard 5V, 10A/250VAC, 10A/30VDC relays, long relay life can be continuously attracted 100,000 times;
4. Onboard power LED indicator and relay status L.ED indicator;
5. The module has overcurrent protection and relay diode continuous current protection functions;

## INTERFACE DEFINITION



## PROTOCOL

Data 1	start flag	Fixed at 0xA0
Data 2	Switch address code	0x01-0xFE means 1-254 switch
Data 3	Operating data	0x00 Off (no) 0x01 On (no) 0x02 Off (feedback) 0x03 Open (feedback) 0x04 Negate 0x05 Link status (feedback)
Data 4	Check code (lower 8 digits)	(Data 1+Data 2+Data 3)%0x100

The format is the same as the transmission, and the meaning of data 1, 2, 4 is also the same, the meaning of data 3: 0x00 off, 0x01 on

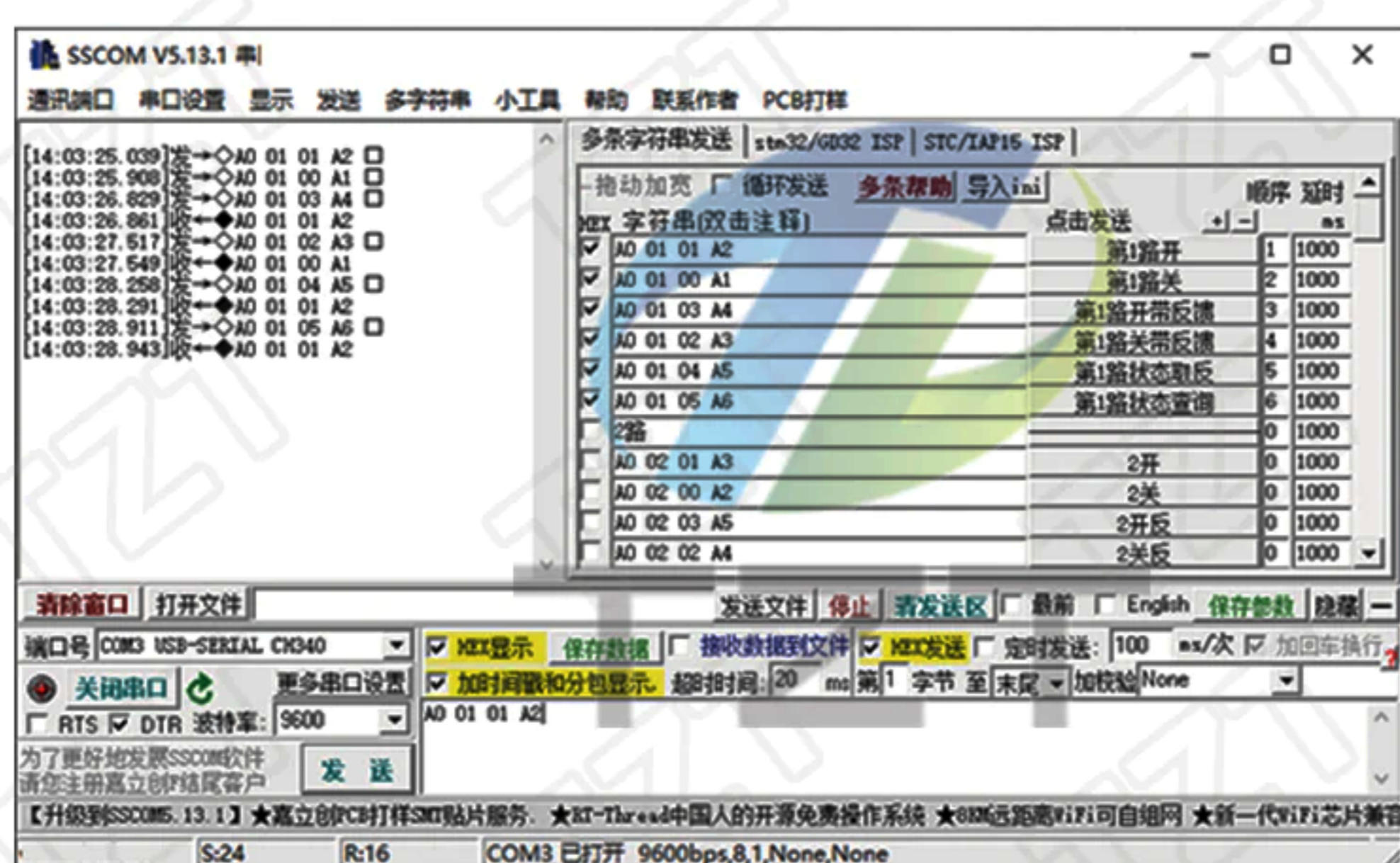
### Application example (hexadecimal)

Open the 1st switch (without feedback) A0 01 01 A2 The switch port acts but no data is returned  
 Turn off the 1st switch (without feedback) A0 01 00 A1 Switch port acts but no data is returned  
 Open the 2nd switch (feedback) A0 02 03 A5 switch port action, the module returns: A0 02 01 A3  
 Reverse the 1st switch (feedback) A0 01 04 A5 Switch port action, the module returns: A0 01 XX XX  
 Query the status of the first switch A0 01 05 A6 Switch port action, the module returns: A0 01 XX XX

## INSTRUCTION

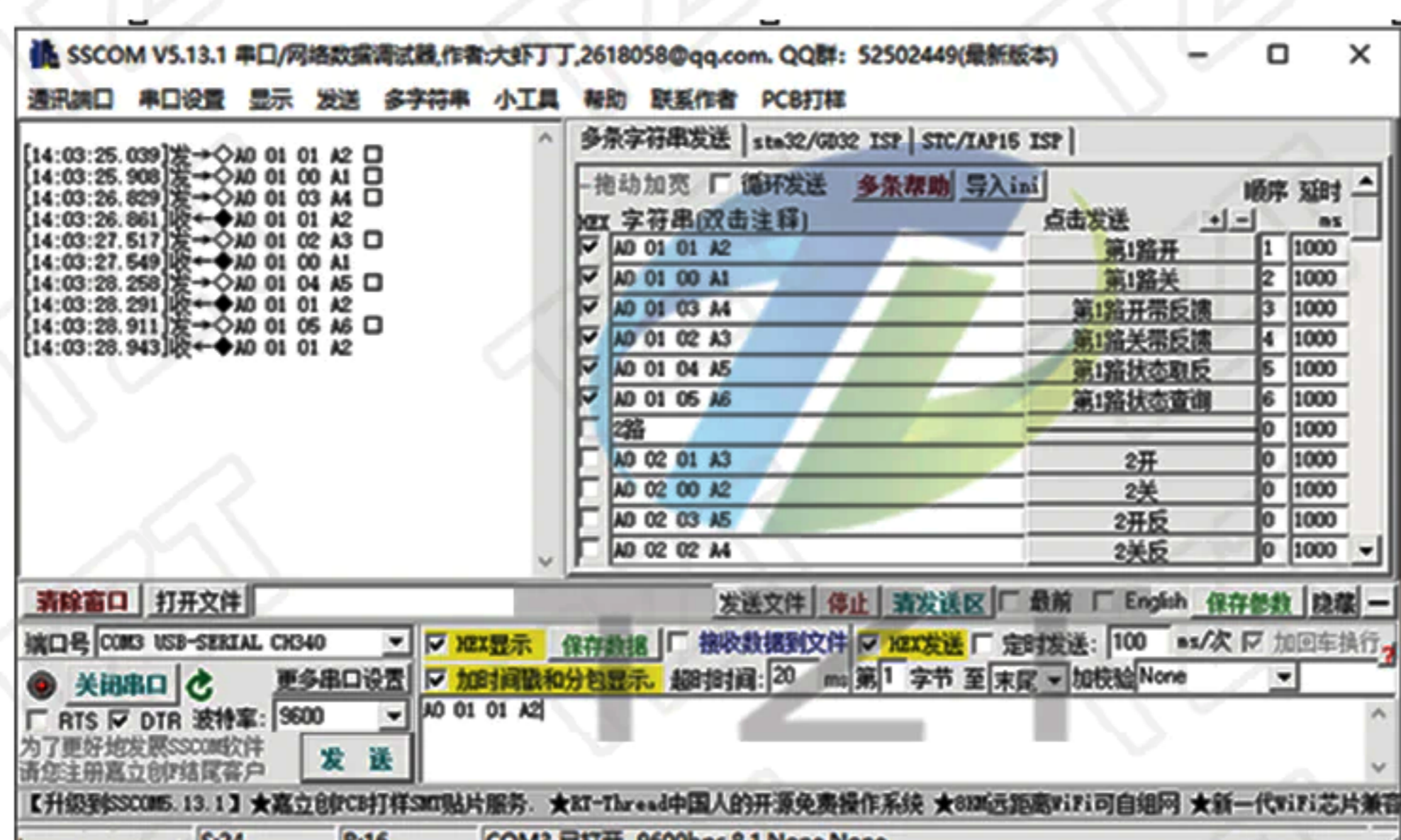
- Step 1: connect the LJSB relay module to the computer and install the CHH340 USB to serial port chip driver.
  - Step 2: Open STC-ISP, SSCOM32-type serial debugging software, select baud rate of 9600, in hexadecimal
- (HEX) send A0 01 01 A2 to open the relay; send A0 01 00 A1 in hexadecimal (HEX) form  
 Turn off the relay, you can choose to send manually or automatically, the following is the SSCOM32 serial debugging software

### Examples of pieces:



### Send manually

Select the baud rate of 9600, check "HEX send", enter the command **A0 01 01 A2** or **A0 01 00 A1**, click "Send" to turn the relay on or off.



### Send regularly

Select the baud rate of 9600, check "HEX send" and "timed send", enter the command **A0 01 04 A5**, click "send", you can realize the regular opening or closing of the relay.



### Auto delivery

Select the baud rate of 9600, click on the "Extended" input commands **A0 01 01 A2** and **A0 01 00 A1** in the SSCOM32 interface, check "HEX send", enter the interval time for automatic loop sending, check "automatic cycle" "Send Ring", the relay can automatically turn on and off.

